



Est. 1954

ACORN ENGINEERING COMPANY
Manufacturer of Engineered Products

WATER COOLERS & DRINKING FOUNTAINS

Office Buildings • Schools • Recreation • Security

Model: A172408B-UBL-BF2S



MEMBER OF



6 Water Coolers

- 6 ADA Wall-Mounted
- 8 Single Wall-Mounted
- 8 Freestanding



9 Bottle Filler

10 Electric Drinking Fountains

- 10 Single & Bi-level Wall-Mounted
- 11 Recessed Wall-Mounted



12 ADA Drinking Fountains

- 12 ADA Wall-Mounted
- 12 ADA recessed

TABLE OF CONTENTS

STANDARD WATER COOLERS AND DRINKING FOUNTAINS FEATURES AND BENEFITS



- All models feature durable, vandal-resistant construction, leading to **lower maintenance costs**.



- Products are manufactured from eco-friendly materials, such as **80% recycled stainless steel**.



- All Acorn Water Coolers and Drinking Fountains feature a **.3 gpm flexible bubbler for water savings**.



- **Child and Adult ADA** compliant models are available in a wide variety of styles, colors and finishes.



- The entire Acorn Water Coolers and Drinking Fountains product line is certified to **safe lead-level mandates**.

- **Universal bi-level**—you choose which side to install the high fountain on—no additional parts required!

- Products with the **Green cUPC** logo meet the most up-to-date standards for green building and water efficiency.



A172408B-UBL

More information on pg. 7



14 Drinking Fountains

- 14 Wall-Mounted
- 15 Recessed



16 ADA Outdoor Drinking Fountains

- 16 ADA Wall-Mounted
- 18 ADA pedestal

20 Outdoor Drinking Fountains

- 20 Pedestal
- 21 Deck-Mounted
- 21 Pet fountains



22 Stainless Steel Drinking Fountains

- 22 ADA Wall-Mounted
- 22 ADA pedestal

ENHANCED DESIGN WATER COOLERS FEATURES AND BENEFITS

- Flexible bubbler with a lower flow rate of .3 gpm (as compared to current bubblers, which have a .45 gpm flow rate).
- A single, flush-mounted pushbutton offers improved vandal resistance. The pushbutton is direct acting and has no complex linkage for easier installation and maintenance.
- Pushbutton and bubbler have an antimicrobial additive to help keep the water cooler sanitary.
- Stream height is easily adjustable through a center hole in the pushbutton.
- Cartridges can be replaced and the strainer can be removed and cleaned without removing the basin or lower wrapper.
- Patent pending "AutoStop" eliminates unnecessary labor by shutting off water to the valve when the strainer cap is removed.
- Drain assembly for bi-level fountains has fewer component parts for simple installation.
- Single ADA coolers are 13 lbs. lighter than standard coolers; bi-level coolers are 16 lbs. lighter.



A171408F

More information on pg. 7



WHY ACORN?

Acorn Engineering Company offers a complete line of water coolers and drinking fountains manufactured from durable and eco-friendly recycled stainless steel. Quality materials and Acorn's quality workmanship, backed by almost 60 years of plumbing experience, lead to long-lasting products that rarely need replacement. With the Acorn name, you are getting a product that will operate trouble-free for many years.

In addition to a functional and durable product, Acorn Engineering offers a variety of attractive styles, finishes and colors to complement any indoor or outdoor area. Our water coolers and drinking fountains are easy to install and maintain and meet NSF regulations; many models are ADA compliant.

With the quality of Acorn's product and the wide array of available options to customize that product, it is easy to find a water cooler or drinking fountain that is beautiful, durable and customized for your facility.



LEAD-FREE STATEMENT

Vermont and California have recently passed laws lowering the permissible lead content for any plumbing fitting coming into contact with water used for drinking or cooking, including drinking fountain bubblers. Effective January 1, 2014, all states must follow new lead-free laws.

Acorn Engineering Company is committed to selling water coolers and fountains that comply with regulations. Our entire product line is certified to the highest standards regarding lead levels; in addition, we offer a stainless steel, 100% lead-free bubbler option that ensures the safest and most sustainable source for drinking water.

GREEN STATEMENT



The Green cUPC logo is a registered trademark of IAPMO. Products with the Green cUPC logo meet the most up-to-date standards for green building and water efficiency. Look for the Green cUPC icon on our products for added water savings!



APPLICATIONS

Acorn's Water Coolers and Drinking Fountains are used in a wide variety of applications where a readily accessible source of clean drinking water is needed, including:

- Schools
- Retail Stores
- Public Buildings
- Recreational Facilities
- Parks
- Campgrounds
- Rest Areas



FINISHES

alpine blue
enviro-glaze®



fairway green
enviro-glaze®



firehouse red
enviro-glaze®



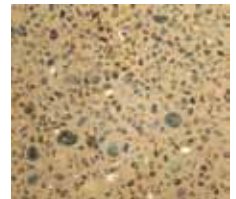
granite
enviro-glaze®



brown
concrete aggregate
semi-rough



tan
concrete aggregate
semi-rough



dark bronze
matte-finish



gold high-polish



stainless steel
high-polish



stainless steel
satin-finish



Not all finishes are available on every product.

Visit www.acorndrinkingfountains.com to see all available color and finish options for our products.



ADA WATER COOLERS

Single Wall-Mounted



A111 Series

This single, vandal-resistant water cooler has a classic design that will complement a wide variety of facilities. The unit features granite powder coated steel surfaces with a stainless steel top and flexible, anti-rotation, non-squirt bubbler. Child or adult ADA compliant when properly installed. ARI rated at 8 gallons of water per hour.

Shown: A111108F

Inset: A111408F (stainless steel)



A111VR Series

The A111VR series offers enhanced vandal resistance with a chrome plated brass bubbler. This unit is a single, vandal-resistant water cooler. This classic design is child or adult ADA compliant when properly installed. ARI rated at 8 gallons of water per hour.

Shown: A111408B-VR



Bi-Level Wall-Mounted



A112 Series

This bi-level water cooler offers flexible installation—you choose which side to install the high fountain on—no additional parts required! Featuring a classic design and vandal resistance, this water cooler has powder coated steel surfaces with stainless steel tops and flexible, anti-rotation, non-squirt bubblers. The unit is child or adult ADA compliant when properly installed. ARI rated at 8 gallons of water per hour.

Shown: A112108F-UBL

Inset: A112408F-UBL (stainless steel)



A112VR Series

This universal bi-level water cooler offers flexible installation—you choose which side to install the high fountain on—no additional parts required! The A112VR series offers enhanced vandal resistance with chrome plated brass bubblers and stainless steel construction. The unit is child or adult ADA compliant when properly installed. ARI rated at 8 gallons of water per hour.

Shown: A112A8VR





A111FGVR Series

This water cooler offers extreme vandal resistance for your toughest areas. With a one-piece, 14 gage, welded stainless steel cabinet and chrome plated brass bubbler, this water cooler will stand up under the most brutal conditions. This unit is child or adult ADA compliant when properly installed and is ARI rated at 8 gallons of water per hour.

Shown: A111408B-FG-VR



A171 & A172 Series - Enhanced Design*

These ADA-compliant water coolers feature many enhancements to improve functionality, and make installation and maintenance easier and more convenient. This unit features low flow bubblers with anti-microbial overmold, a larger diffuser area on the top of the fountain to reduce splashing, and a flush mounted push button for improved vandal resistance. ARI rated at 8 gallons of water per hour.

Shown: A171108F

Inset: A172108F-UBL



*More enhanced features & benefits are highlighted on page 3.

Water Coolers - ADA Wall-Mounted



Single Wall-Mounted



A311 Series

This vandal-resistant, wall-mounted water cooler is granite powder coated for an attractive finish. It features a flexible, anti-rotation, non-squirt bubbler. ARI rated at 8 gallons of water per hour. Optional hot water glass filler can be specified (-HGF).

Shown: A311108F
Insert: A311408F



A611 Series

This free standing, vandal-resistant water cooler is granite powder coated and features a flexible, anti-rotation, non-squirt bubbler and copper tube on stainless steel tank evaporator. ARI rated at 8 gallons of water per hour. Optional hot water service is available; specify-HGF.

Shown: A611108F
Insert: A611408F



Freestanding



A511 Series

This compact, free standing, vandal-resistant water cooler is granite powder coated for an attractive finish. It features a flexible, anti-rotation, non-squirt bubbler. ARI rated at 5 gallons of water per hour. Optional hot water glass filler is available; specify-HGF.

Shown: A511105F
Insert: A511405F



Bottle Filler

BF2S

This ADA compliant bottle filler uses refrigerated water from the host water cooler to provide users with an easy way to fill water bottles. The bottle filler helps the environment by reducing the waste associated with single serve plastic water bottles.



- 1 18 gage powder coated galvanized steel (stainless steel option shown).
- 2 Touch-free sensor activation.
- 3 1 gpm quick fill flow rate allows users to fill a water bottle quickly.
Laminar flow eliminates splash.
Optional filter.
- 4 Removable top for easy battery replacement.
Easy installation and maintenance.

Works with A111, A112 (pg. 6), A171, A172 (pg 7) Series Water Coolers.



Powdercoated,
galvanized steel

Water Coolers - Wall-Mounted & Free Standing



ELECTRIC DRINKING FOUNTAINS

Wall-Mounted - Round



A131.8 Series

This wall-mounted, vandal-resistant, stainless steel single electric drinking fountain with back panel is constructed from 18 gage, 304 stainless steel and features a polished, chrome plated brass, anti-rotation, non-squirt bubbler. The fountain is ARI rated at 8 gallons of water per hour and when properly installed, it is child or adult ADA compliant.

Shown: A131408B



A132.8 Series

This wall-mounted, vandal-resistant, stainless steel bi-level electric drinking fountain with 32" wide back mounting panel is constructed from 18 gage, 304 stainless steel. It features a chrome plated brass bubbler and integral P-trap. ARI rated at 8 gallons per hour. Child or adult ADA compliant when properly installed.

Shown: A132408B-W32



Wall-Mounted - Square



A151.8 Series

This wall-mounted, vandal-resistant, stainless steel single electric drinking fountain with back panel is constructed from 18 gage, 304 stainless steel and features a polished, chrome plated brass, anti-rotation, non-squirt bubbler. The fountain is ARI rated at 8 gallons of water per hour and when properly installed, it is child or adult ADA compliant.

Shown: A151408B

Inset: A151408B-FG



A152.8 Series

This wall-mounted, vandal-resistant, stainless steel bi-level electric drinking fountain with 32" wide back mounting panel is constructed from 18 gage, 304 stainless steel. It features a chrome plated brass bubbler and integral P-trap. ARI rated at 8 gallons per hour. Child or adult ADA compliant when properly installed.

Shown: A152408B-W32

Inset: A152408B-FG-W32



Recessed



A181 Series

This vandal-resistant electric drinking fountain is inverted for child or adult ADA compliance (when properly installed). The cabinet is constructed from 18 gage, 304 stainless steel, and has a 16 gage galvanized mounting frame. The unit features a chrome plated brass bubbler. ARI rated at 8 gallons of water per hour.

Shown: A181408B



A481.8 & A481.8CUSP Series

This electric drinking fountain is vandal-resistant. It has an 18 gage, 304 stainless steel cabinet with a 16 gage galvanized mounting frame. It features a polished, chrome plated brass, anti-rotation, non-squirt bubbler. This drinking fountain ARI rated at 8 gallons of water per hour. Optional cuspidor available — specify -CUSP.

Shown: A480400-CUSP (drinking fountain & cuspidor - also available separately)

Electric Drinking Fountains



ADA DRINKING FOUNTAINS

Wall-Mounted - Round



A131 Series

This round, wall-mounted single drinking fountain is constructed from 18 gage, 304 stainless steel. It has a polished, chrome plated brass, anti-rotation, non-squirt bubbler and integral P-trap. Child or adult ADA compliant when properly installed.

Shown: A131400B



A132 Series

This unit features two 18 gage, 304 stainless steel drinking fountains mounted on a 32" wide back panel. Each fountain has a chrome plated brass bubbler and integral P-trap. The fountains are child or adult ADA compliant when properly installed.

Shown: A132408B-W32



Recessed



A181 Series

This vandal-resistant drinking fountain has an 18 gage, 304 stainless steel cabinet and 16 gage, galvanized mounting frame. It features a polished, chrome plated brass, non-squirt bubbler and is child or adult ADA compliant when properly installed. This unit may be specified with a cuspidor (-CUSP).

Shown: A181400B-CUSP (for drinking fountain & cuspidor - also available separately)



Wall-Mounted - Cast Iron



A152J Series

This unit features two contoured, white enamel coated cast iron box fountains, that are resistant to sunlight, heat, moisture and wear. Both fountains feature stainless steel bubblers. The fountains are child or adult ADA compliant when properly installed.

Shown: A152J00B



Wall-Mounted - Square



A151 & A151FG Series

This long contoured box style drinking fountain is constructed from 18 gage, 304 stainless steel. It is equipped with a polished, chrome plated brass bubbler and integral P-trap for improved vandal resistance. A 14 gage, vandal-resistant model is available. (A151FG)

Shown: A151400B
Insert: A151400B-FG



A152 & A152FG Series

Our A152 series drinking fountain is constructed from 18 gage, 304 stainless steel and features a 32" wide back panel with bi-level contoured box fountains. The unit includes polished, chrome plated brass bubblers and integral P-traps. The unit is child or adult ADA compliant when properly installed. A 14 gage, vandal-resistant model is also available (A152FG).

Shown: A152400F-W32
Inset: A152400B-FG-W32



Drinking Fountains - ADA Wall-Mounted



DRINKING FOUNTAINS

Wall-Mounted



A421 Series

This round drinking fountain is constructed from 18 gage, type 304 stainless steel. It has a polished, chrome plated brass, anti-rotational, non-squirt bubbler and integral P-trap.

Shown: A421400B



A441 & A441FG Series

Our A441 series is a short contoured box fountain available in 18 gage, 304 stainless steel. It has a polished, chrome-plated brass, anti-rotational, non-squirt bubbler and integral P-trap. A 14 gage, vandal-resistant model is also available (A441FG).

Shown: A441400B

Inset: A441400B-FG



A461 Series

This round bowl fountain is constructed from 18 gage, 304 stainless steel. It is equipped with a polished, chrome plated brass pushbutton bubbler.

Shown: A461400P



A4A1 Series

This economical square drinking fountain is constructed from 18 gage, 304 stainless steel. The fountain's compact size makes it a great choice for smaller spaces. The unit includes a chrome plated brass pushbutton bubbler.

Shown: A4A1400P



Recessed



A481 Series

This vandal-resistant, recessed drinking fountain is constructed from 18 gage, 304 stainless steel with a 16 gage, galvanized steel mounting frame. It includes a polished, chrome plated brass bubbler. Optional cuspidor available—specify -CUSP.

Shown: A481400B-CUSP (for drinking fountain & cuspidor - also available separately)



A4B1 Series

This drinking fountain features both simple and economical construction from 18 gage, 304 stainless steel. The unit includes a chrome plated brass bubbler with a non-squirt feature. Optional P-trap can be included (specify -PT1).

Shown: A4B1400P



Drinking Fountains - Wall-Mounted



Wall-Mounted - Round



A1C1 Series

This vandal-resistant, round drinking fountain features an 18 gage, 304 stainless steel bowl with heavy duty, 11 gage galvanized steel arm. This scratch and corrosion resistant unit stands up to sunlight, heat, moisture and wear for superior outdoor durability. It is equipped with a polished, chrome plated brass bubbler and is adult ADA and TAS 11 – 15 compliant when properly installed. The fountain is available in a stainless steel finish or in your choice of three colors: Alpine Blue, Fairway Green or Firehouse Red. A freeze-resistant model is available—specify –FRA1.

Shown: A1C1500B



A1C2 Series

This two station bi-level drinking fountain features a back panel with two round steel fountains. Fountain arms are heavy duty, 11 gage galvanized steel with a corrosion and scratch resistant finish that is resistant to sunlight, heat, moisture and wear. The fountain bowl is constructed from 18 gage, 304 stainless steel. Each unit is equipped with a chrome plated brass bubbler. The fountain is ADA and ADA standing person compliant and TAS or TAS 11 – 15 compliant when properly installed. It is available in a stainless steel finish or in your choice of three colors: Alpine Blue, Fairway Green or Firehouse Red. A freeze-resistant model is available—specify –FRA4.

Shown: A1C2500B-BPG



Wall-Mounted - Square



A1G1 & A1G2 Series

These vandal-resistant square drinking fountains feature your choice of a single fountain or two station bi-level fountains with back panel. The fountain arms are constructed from heavy duty, 11 gage galvanized steel with a corrosion and scratch resistant finish that is resistant to sunlight, heat, moisture, and wear. The bowl is 18 gage, 304 stainless steel. Each fountain features a polished, chrome plated brass bubbler. The unit is child or adult ADA compliant when properly installed. The fountain is available in a stainless steel finish or in your choice of three colors: Alpine Blue, Fairway Green or Firehouse Red. A freeze-resistant model is available—specify –FRA1.

Shown: A1G1500B

Insert: A1G2500B-BPG



A1E1 Series

This square drinking fountain is perfect for outdoor use. The arm is constructed from reinforced concrete with an aggregate finish, available in brown or tan. The bowl is 18 gage, 304 stainless steel. This fountain's natural appearance blends well with outdoor settings and the concrete construction is resistant to sunlight, heat, moisture and wear. The fountain is equipped with a polished, chrome plated brass bubbler and is child or adult ADA compliant when properly installed. A freeze-resistant model is available—specify –FRA1.

Shown: A1E1900B



Durable Wall-Mounted



A112J Series

This durable two-station trough style fountain is constructed from white enameled cast iron, making it resistant to sunlight, heat, moisture and wear. The unit features two lead-free stainless steel bubblers. Pushbutton activation can be specified with option –PB.

Shown: A112J00Q



A112 & A113 Series

This two- or three-station units are constructed from cast aluminum with a white, powder coated finish that makes it resistant to sunlight, heat, moisture and wear. The fountain comes equipped with chrome plated brass bubblers and is child or adult ADA compliant when properly installed.

Shown: A112400B

Inset: A113H00B



Outdoor Drinking Fountains - ADA Wall-Mounted



Pedestal - 1 Station



ABE1 Series

This pedestal-mounted, ADA compliant outdoor drinking fountain blends in with any natural décor and is resistant to sunlight, heat, moisture and wear. The fountain has an 18 gage, 304 stainless steel bowl and a polished, chrome plated brass bubbler. A heavy duty steel access door ensures vandal resistance while giving maintenance personnel access to the fountain's inner workings. A freeze-resistant model is available—specify –FRU1.

Shown: ABE1900B



ABC1 Series

This round, pedestal-mounted outdoor drinking fountain is constructed from heavy duty 11 gage welded steel for a corrosion and scratch resistant finish. It is also resistant to sunlight, heat, moisture and wear. The fountain is child or adult ADA compliant when properly installed and includes a heavy duty steel access door that is vandal-resistant, but gives maintenance staff access to the fountain's inner workings. The unit is available in a stainless steel finish or in your choice of three colors: Alpine Blue, Fairway Green or Firehouse Red. A freeze-resistant model is available—specify –FRU1.

Shown: ABC1500B



ABG1 Series

This square, pedestal-mounted drinking fountain is child or adult ADA compliant when properly installed. It is constructed from heavy duty 11 gage welded steel with an 18 gage stainless steel bowl and polished, chrome plated brass bubbler. This fountain is a perfect choice for outdoor environments because it has a corrosion and scratch resistant finish that stands up to sunlight, heat, moisture and wear. The unit is available in a stainless steel finish or your choice of colors Alpine Blue, Fairway Green or Firehouse Red. A freeze-resistant model is available—specify –FRU1.

Shown: ABG1500B



Pedestal - 2 & 3 Station



ABE2 & ABE3 Series

These square two- or three-station fountains are constructed from reinforced concrete and available in your choice of tan or brown aggregate finishes. Included are 18 gage, 304 stainless steel bowls and chrome plated brass bubblers. These concrete fountains make a perfect addition to any natural outdoor setting and are resistant to sunlight, heat, moisture and wear. Child or Adult ADA compliant when properly installed. A freeze-resistant model is available—specify –FRU2 (two-station) or –FRU3 (three-station).

Shown: ABE3900B



ABC2 & ABC3 Series

These two- or three-station drinking fountains are constructed from heavy duty, 11 gage galvanized steel with a corrosion and scratch-resistant finish that stands up to sunlight, heat, moisture, and wear for outdoor durability. The unit is child or adult ADA compliant when properly installed and includes an 18 gage, 304 stainless steel bowl and polished, chrome plated brass bubbler. The fountain is available in a stainless steel finish or in your choice of three colors: Alpine Blue, Fairway Green or Firehouse Red. A freeze-resistant model is available—specify –FRU2 (two-station) or –FRU3 (three-station).

Shown: ABC3500B



ABG2 & ABG3 Series

This square, two- or three-station drinking fountain is child or adult ADA compliant when properly installed. It is constructed from heavy duty 11 gage welded steel and is available in a stainless steel finish or your choice of colors Alpine Blue, Fairway Green or Firehouse Red. Each station includes an 18 gage, 304 stainless steel bowl and polished, chrome plated brass bubbler. The fountain is a perfect choice for outdoor environments because it has a corrosion and scratch resistant finish that stands up to sunlight, heat, moisture and wear. A freeze-resistant model is available—specify –FRU2 (two-station) or –FRU3 (three-station).

Shown: ABG3500B



Outdoor Drinking Fountains - ADA Pedestal



OUTDOOR DRINKING FOUNTAINS

Pedestal



A7C1 Series

This outdoor drinking fountain is constructed from heavy duty, 11 gage galvanized, welded steel with an 18 gage, 304 stainless steel bowl and polished, chrome plated brass bubbler. The fountain is a perfect choice for outdoor environments because it has a corrosion and scratch resistant finish that stands up to sunlight, heat, moisture and wear. The fountain comes in your choice of a stainless steel finish or your choice of colors Alpine Blue, Fairway Green or Firehouse Red. A freeze-resistant model is available—specify –FRU1.

Shown: A7C1500B



A7D1 Series

This drinking fountain is resistant to sunlight, heat, moisture and wear, making it perfect for outdoor environments. Constructed from reinforced concrete, this fountain comes in your choice of tan or brown aggregate finish and has an 18 gage, 304 stainless steel bowl and polished, chrome plated brass bubbler. A freeze-resistant model is available—specify –FRU1.

Shown: A7D1900B



A7E1 Series

This outdoor drinking fountain is constructed from reinforced concrete and has a tan or brown aggregate finish that is resistant to sunlight, heat, moisture and wear. An 18 gage, stainless steel bowl and polished, chrome plated brass bubbler are included. A freeze-resistant model is available—specify –FRU1.

Shown: A7E1900B



A7G1 Series

This outdoor drinking fountain is constructed from heavy duty, 11 gage galvanized, welded steel with an 18 gage, 304 stainless steel bowl and polished, chrome plated brass bubbler. The unit has a corrosion and scratch resistant finish that is resistant to sunlight, heat, moisture and wear. The fountain is available in a stainless steel finish or your choice of colors Alpine Blue, Fairway Green or Firehouse Red. A freeze-resistant model is available—specify –FRU1.

Shown: A7G1500B





A7F1 Series

This pedestal mounted drinking fountain is constructed from an 18 gage, 304 stainless steel bowl mounted onto a green powder coated heavy duty steel pipe pedestal. The unit features lever operation and a chrome plated brass bubbler. This outdoor drinking fountain can withstand sunlight, heat and moisture.

Shown: A7F1500L



Deck Mounted



A861 Series

This 18 gage, 304 stainless steel, deck mounted drinking fountain features a chrome plated brass push button bubbler and a small round fountain bowl.

Shown: A861400P



Pet Fountains



A8C1 Series

This pet fountain attaches to the side of our vandal-resistant, outdoor, steel drinking fountains. It has a round base constructed from heavy duty, 11 gage steel that comes in your choice of a stainless steel finish or powder coated colors Alpine Blue, Fairway Green or Firehouse Red. The unit features push button operation mounted on the pedestal. The fountain bowl is constructed from 18 gage, 304 stainless steel and has a chrome plated brass bubbler.

Shown: A8C1500B-PF



A8D1 Series

This outdoor pet fountain is constructed from concrete with your choice of a tan or brown aggregate finish. The fountain bowl is constructed from heavy duty, 11 gage steel that comes in your choice of a stainless steel finish or powder coated colors Fairway Green, Alpine Blue or Firehouse Red. This pet fountain is designed to attach to the side of our vandal-resistant concrete drinking fountains.

Shown: A8D1500B-PF

Outdoor Drinking Fountains - Pedestal, Deck & Pet



STAINLESS STEEL DRINKING FOUNTAINS

Wall-Mounted



1670 Series

This vandal-resistant, chase-mounted drinking fountain is constructed from 14 gage, 304 stainless steel. The unit has seamless welded construction with a satin finish and a deck-mounted bubbler. Front access model available—specify –FA.

Shown: 1670-FA-1-BP-3



1672 Series

This vandal-resistant, chase-mounted, ADA compliant drinking fountain is constructed from seamless welded 14 gage, 304 stainless steel. A deck-mounted bubbler is included. Front access model available—specify –FA.

Shown: 1672-FA-1-BC-3

Security Drinking Fountains



2010 Series

This vandal-resistant, front-mounted drinking fountain is constructed from 16 gage, 304 stainless steel. The unit has seamless welded construction with a satin finish and a deck-mounted bubbler.

Shown: 2010-1-BC-3



2012 Series

This vandal-resistant, ADA-compliant, front-mounted drinking fountain is constructed from seamless welded 14 gage, 304 stainless steel. A deck-mounted bubbler is included.

Shown: 2012-1-BC-3



1674 Series

This compact design features a bubbler and pushbutton on wall-mounted assembly. The fixture is constructed from 14 gage, 304 seamless welded stainless steel. Pushbutton & bubbler are stainless steel.

Shown: 1674



2020 Series

This ADA compliant two-station drinking fountain features 16 gage, type 304 seamless stainless steel construction for lasting durability. The unit includes two stainless steel bubblers with mouthguards. The fixture is designed for ease of installation and maintenance from the front of the finished wall.

Shown: 2020-1-BC-3

Stainless Steel Drinking Fountains - Wall-Mounted





Est. 1954

ACORN ENGINEERING COMPANY
Manufacturer of Engineered Products

ACORN ENGINEERING COMPANY
Manufacturer of Engineered Products
P.O. Box 3527
City of Industry, CA 91744-0527 U.S.A.
800-488-8999 • 626-336-4561
Fax 626-961-2200
www.acorneng.com

MORRIS GROUP INTERNATIONAL



ACORN-GENCON PLASTICS, LLC

Injection Molded Products
13818 Oaks Avenue • Chino, CA 91710 U.S.A.
Tel 909-591-8461 • Fax 909-628-7465
www.acorn-gencon.com



ACORNVAC, INC.

Vacuum Plumbing Systems
13818 Oaks Avenue, Chino, CA 91710
Tel. 800-591-9920 • Tel. 909-902-1141 • Fax: 909-902-5041
www.acornvac.com



CHRONOMITE LABORATORIES, INC.

Tankless Electric Water Heaters
P.O. Box 3527 • City of Industry, CA 91744-0527 U.S.A.
Tel 800-447-4962 • Fax 626-937-4279
www.chronomite.com



ELMCO GROUP

Manufacturer Representatives
P.O. Box 3787, City of Industry, CA 91744
15070 Proctor Ave. • City of Industry, CA 91746
Tel 626-333-9942 • Fax 626-961-3813
www.morrisgroup.co



JAY R. SMITH MFG. CO.®

Plumbing and Drainage Products
P.O. Box 3237 • Montgomery, AL 36109-0237
Tel 800-467-6484 • 334-277-8520 • Fax 334-272-7396
www.jrsmith.com



MORRIS PROPERTY MANAGEMENT COMPANY

Construction, Interior Design, Landscaping and Maintenance
15058 Proctor Avenue • City of Industry, CA 91746
Tel 626-855-4888 • Fax 626-855-4864
www.morrispropertiesmgt.com



MORRIS INDUSTRIES MEXICO, S. DE R.L. DE C.V.

Central and Latin America Manufacturing and Sales
Maquiladoras #1387-1 Col.Cd. Industrial Tijuana, B.C., C.P. 22444
Tel 011-52-664-623-4580 • Fax 011-52-664-623-4590
www.morrisgroup.co



MURDOCK MANUFACTURING

Drinking Fountains, Hydrants, Pre-engineered Modular Buildings,
Restroom Fixtures and Accessories
P.O. Box 3527 • City of Industry, CA 91744-0527 U.S.A.
Tel 800-45-DRINK • 626-333-2543 • Fax 626-855-4860
www.murdockmfg.com



POTTER ROEMER

Fire Protection Equipment
P.O. Box 3527 • City of Industry, CA 91744-0527 U.S.A.
Tel 800-366-3473 • Fax 626-937-4777
www.potterroemer.com



WHITEHALL MANUFACTURING

Hospital and Therapy Products
P.O. Box 3527 • City of Industry, CA 91744-0527 U.S.A.
Tel 800-782-7706 • 626-968-6681 • Fax 626-855-4862
www.whitehallmfg.com



MORRIS GROUP
INTERNATIONAL
www.morrisgroup.co