



JAY R. SMITH MFG. CO.
MEMBER OF MORRIS GROUP INTERNATIONAL



Contractor Friendly Products

Products that are labor saving and easy to install



MORRIS GROUP
INTERNATIONAL
www.morrisgroup.co



TABLE OF CONTENTS



What are Contractor Friendly Products?	2
Quarterback Water Closet Support	3
Labor Saver® Fixture Support.....	4
Siphonic Roof Drains.....	5
Carousel® Roof Drain	6
Roof Drain and Overflow Drain with Deck Plate	7
Roof Drain with Deck Plate	8
Top Mount Drain Elevator.....	9
Downspout Nozzle	9
Quad Close® “Stink Stopper” Trap Seal Device.....	10
Protective Floor Drain and Cleanout Cover	10
FormIt® Drain Installation Device.....	11
Jubilee “Twis-to-Floor®” Cleanout Series	12
The Boss Tee, Cleanout and Test Tee	13
Cored Hole Stainless Steel Boxed Hydrant.....	14
Guardian Plus Hydrant and Stainless Steel Box	15
Enviro-Flo® II Trench Drain Series	16
Rebar and Double Arrow Channel Chairs	17
Rante-Arrow Channel Chair.....	18

WHAT ARE CONTRACTOR-FRIENDLY PRODUCTS?



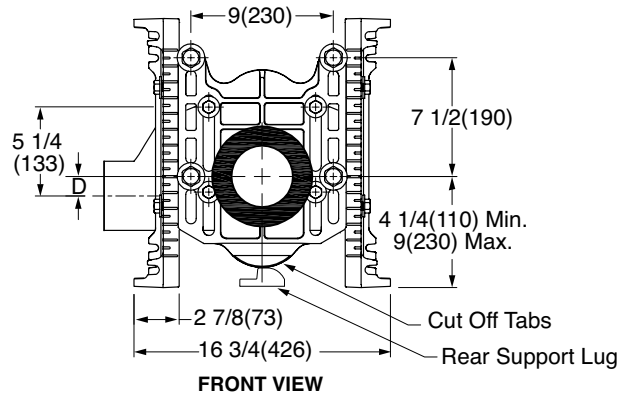
The Jay R. Smith Mfg. Co.® Contractor-Friendly Products are designed with the installer in mind. These products are designed to save time, require less manpower, and make the contractor's job easier. Listed below are just a few of the benefits to the contractor in using these products.

- A. **-M54 and -M54-M58 for Water Closet Supports** – Three anchor points for secure installation.
- B. **Labor Saver® Fixture Support** – Excellent design for prefab work.
- C. **Siphonic Roof Drains** – Level pipe installation; smaller and less piping.
- D. **Carousel® Roof Drain** – Adjustability to varying roof insulation thickness.
- E. **Roof and Overflow Drain with Deck Plate** – Pre-assemble to drain body.
- F. **Low Profile Dome Roof Drain with Deck Plate**– Saves time as the roof drain with deck plate and securing clips can be pre-assembled and set in place from surface of roof.
- G. **Top Mount Drain Elevator** – Elevates roof drains to compensate for insulation thickness.
- H. **Downspout Nozzle** – Diverts water away from building, eliminating wall stains.
- I. **Quad Close® “Stink Stopper” Trap Seal Device** – Protects the trap seal; easy to install.
- J. **Protective Floor Drain and Cleanout Covers** – Protects floor drain strainer and cleanout tops during the pour.
- K. **FormIt™ Drain Installation Device for Floor & Shower Drains, and Sanitary Floor Sinks** - Permits the pre-assembly of the drain to the deck.
- L. **Jubilee Twis-To-Floor® Cleanout Series** – Before and after pour adjustment.
- M. **The Boss Tee, Cleanout and Test Tee** – Hydrostatically test for leaks during construction; a standard cleanout after testing.
- N. **Cored Hole Stainless Steel Boxed Hydrant** – Simple and easy to install in 6” diameter core drilled concrete wall.
- O. **Guardian Plus Hydrant & Box** – Fits flush to building in the space of one standard course brick.
- P. **Enviro-Flo® II Trench Drain Series** – Durable, lightweight polypropylene channels.
- Q. **Rebar Channel Chairs** – Use job site materials to anchor channel.
- R. **Double Arrow** – Supports two channel ends.
- S. **Rante-Arrow Channel Chair** – Eliminates float; only one per channel needed.



Figure # M58-M54 Faceplate,
and -M54 Side Mounted Legs

M58-M54 FACEPLATE WITH ADJUSTABLE NIPPLE AND "O" RING



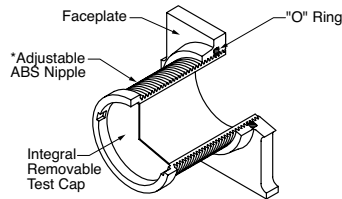
Product Features:

M54 Side Mounted Leg:

- Symmetric construction.
- Increased load bearing capability.
- One bolt per leg allowing quicker and easier prefabrication.
- Incremental markings in 1/2" increments.
- Quicker rough-in for the installing contractor.
- Three Anchor Points for Secure Installation.

M58 Faceplate with "O" Ring Seal:

- Adjustable ABS nipple with integral removable test cap and integral molded coupling.
- 10 inch-long nipple covers various installations.
- Enhanced sealing with an "O" ring at the faceplate.



*ABS (Regularly Furnished)

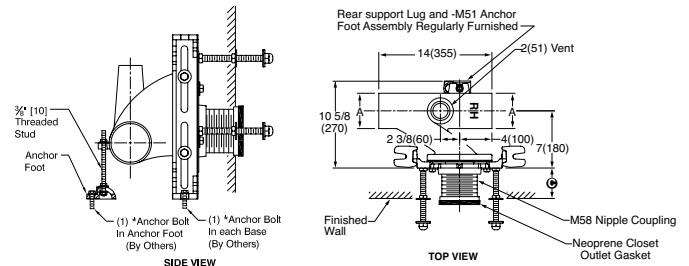
NOTE: The M58-M54 suffix is furnished with the M54 faceplate and side mount base supports, with the faceplate machined for the "O" ring seal and the adjustable 10" ABS nipple

NOTE: Base support must be securely anchored to floor (with 1/2" (13) bolts provided by the installer).

NOTE: All single supports shall have the rear support lug anchored by contractor to assure a rigid installation. The rear support completes the 3 point anchoring system for ultimate stability of the installation.

NOTE: Dimensions shown in parentheses are in millimeters.

-M51 ANCHOR FOOT ASSEMBLY FOR USE WITH SINGLE HORIZONTAL FITTINGS



-M54/-M58-M54 can be used with Figure # Series 0209-0210-0211-0220-0230-0240-0250. M51 anchor foot assembly and rear support lug are regularly furnished.

M51 Anchor Foot:

- Provides back anchor support for any single horizontal or vertical fixture support.
- Consists of a 3/8" stud and a cast iron anchor foot.



Wall chase images featuring a Fig. # 0240DY-M54 closet support installation.



LABOR SAVER® FIXTURE SUPPORT



Ox Bow Design Series

Figure # 0710
Labor Saver Fixture Support-Lavatory Support
with Concealed Arms

Product Features:

- Compact and rigid one piece steel frame.
- Pre-assembled - few components to be lost.
- Reduced inventory - one support for most lavatory applications.
- Unique bracket design - for all types of concealed lavatory fixtures.
- Reduced installation space - fits narrow wall and metal stud configurations.
- Labor savings - dramatically reduces cost associated with assembly, installation and material handling.
- Excellent versatility for prefab assembly in battery.
- Easier to adjust - needs front adjustment only after the wall is in place.
- Superior to traditional support that requires both front and back access for final adjustment.
- Conforms to the applicable ASTM Specifications.
- Meets or exceeds the applicable requirements of ASME A112.6.1M 1997.
- IAPMO Listed
- Patent Pending

FUNCTION: The Labor Saver Fixture Support has been designed to speed up the installation process by using a one-piece, pre-assembled rigid steel frame construction. This innovative support allows for installation in narrow wall and metal stud configurations. The fixture support features both horizontal and vertical adjustability to fit varying installation conditions.

Lavatory Support with Concealed Arms

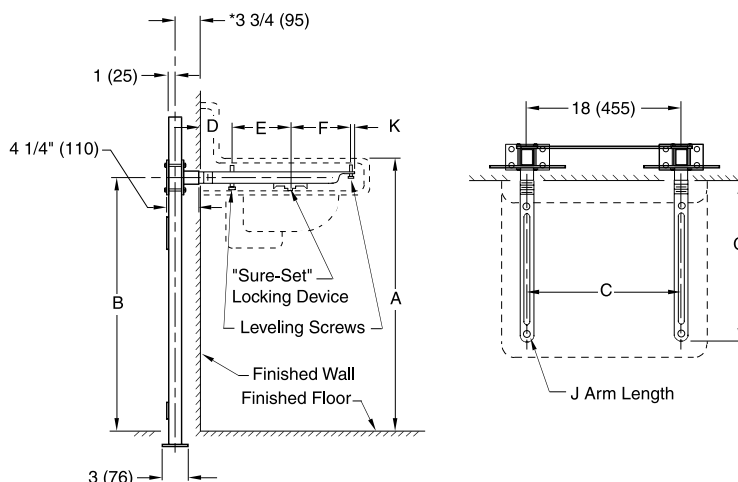
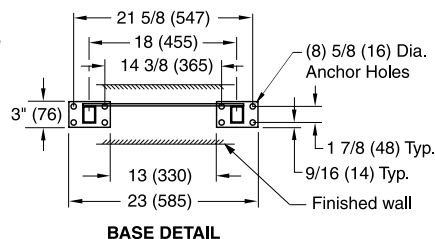


Fig. 0710. FOR HIGH BACK LAVATORIES (shown)

NOTE: The rough-in dimensions listed on this drawing are based on current information available to Jay R. Smith by the fixture manufacturers. We recommend that you verify these dimensions with the fixture manufacturer. We will not accept responsibility for rough-in dimension changes by the fixture manufacturer.

NOTE: *This dimension can be increased when fixture support is to be installed behind the wall. (Specify when required and wall thickness).

NOTE: Dimensions shown in parentheses are in millimeters.



The Symmetric Design Series will accommodate a variety of fixture manufacturers in several configurations:

- Off-the-floor urinals (Fig. # 0609/0610; 0614 and 0615; and 0616/0617)
- Off-the-floor lavatories; exposed arm (Fig. #0760 and 0762) and concealed hanger (Fig. # 0801)
- Off-the-floor water coolers (Fig. # 0830 and 0831)
- Off-the-floor sinks (Fig. # 0924 and 0925)



Lavatory support with exposed arms (Figure #0760)

Plastic Insert to Protect Bracket Threads



Protect the arm coupling threads during installation with plastic inserts provided. The inserts remain in place during wall construction, leaving an opening and providing quick access for the lavatory arm installation.

SIPHONIC ROOF DRAIN 15 1/4" (390) DIAMETER - LOW PROFILE DOME



Figure # 1005 and 1605
Siphonic Roof Drains

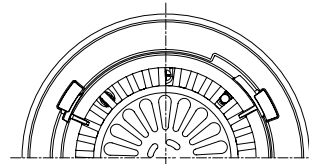
Product Features:

- The air baffle on the roof drain promotes full-bore flow.
- Full-bore flow within the piping reduces pipe diameter as compared to open channel, traditional gravity flow, which operates at 1/2 the capacity.
- Siphonic action is independent of pipe pitch or gradient.
- Smaller pipe diameters allow maximum use of open space without intrusion of drainage piping. This also reduces material costs.
- The point of discharge for the roof can be concentrated to one corner, typically, rather than out of the building in several points.
- Slab installation costs are minimized, reducing excavation, backfill costs, and exterior underground piping.
- Siphonic systems promote self cleaning of debris from the piping system.
- Fully tested and certified in accordance with ANSI/ASTM A112.6.9 "Siphonic Roof Drains."

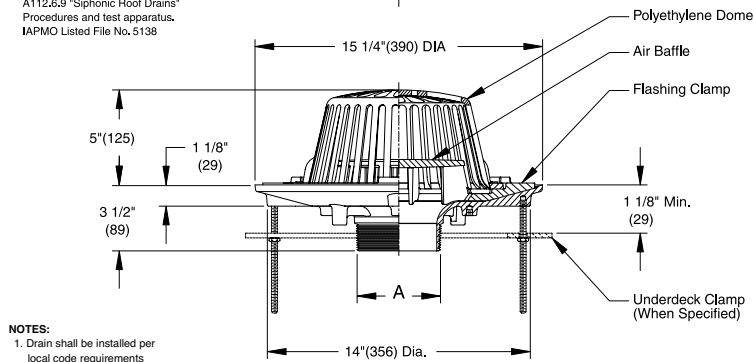
FUNCTION: For use in engineered siphonic roof drainage systems. May be used in flat roof of any construction. Large low profile dome provides sufficient free area for quick drainage of rainwater and protects the drain sump, baffle and connected piping from the intrusion of debris. Internal air baffle creates siphonic drainage action, producing more efficient drainage than traditional roof drains.

**Performance Data		
A(Pipe Size) in. (mm)	Max. Capacity cfs (lps)	Resistance Value, K
02 (50)	0.50 (41.2)	0.13
0250 (64)	0.60 (17.0)	0.13
03 (75)	1.40 (39.5)	0.16
04 (100)	1.70 (48.1)	0.23

**As tested and certified by ANSI/ASME
A112.6.9 "Siphonic Roof Drains"
Procedures and test apparatus.
IAPMO Listed File No. 5138



Free Area
102.5 Sq. In.
(661) Sq. Cm.



NOTES:

1. Drain shall be installed per local code requirements
2. 2 1/2" pipe size only available with male threaded outlet.
3. Dimensions shown in parentheses are in millimeters.

A(Pipe Size) = 02(50), *0250(64), 03(75) or 04(100)

☐ Fig. 1005T MALE THREADED OUTLET
☐ Fig. 1005Y *NO HUB OUTLET

recommended deck opening	
with suffix -R	17 (430) DIA
less suffix -R	14 (355) DIA

REGULARLY FURNISHED:

Duco Cast Iron Body, Flashing Clamp, Air Baffle and Polyethylene Dome.

VARIATIONS:

- ☐ Sump Receiver -R
- ☐ Underdeck Clamp -C
- ☐ Underdeck Clamp for 10" Deck Opening -C10
- ☐ "L" Shaped Underdeck Clamp -CL
- ☐ Vandal Proof Dome -U

OPTIONAL MATERIALS:

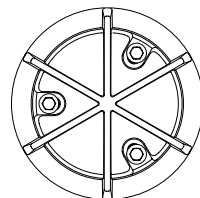
- ☐ Aluminum Dome -AD
- ☐ Cast Iron Dome -CID
- ☐ Galvanized Cast Iron Dome -CIDG
- ☐ Galvanized Cast Iron -G
- ☐ Rough Bronze Dome -RBD

SIPHONIC GUTTER DRAIN 6" (150) DIAMETER - LOW PROFILE GUTTER DRAIN

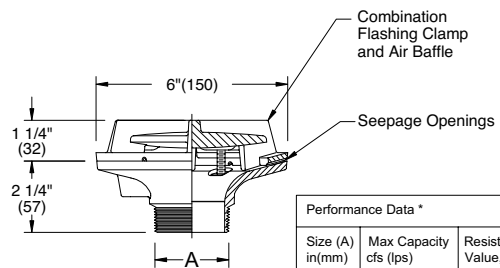
FUNCTION: For use in engineered siphonic roof drainage systems for gutters, parapets, small balconies, sills, cornices, marquees and other small overhanging areas where drainage of rainwater is required. Air baffle creates siphonic drainage action, producing more efficient drainage than traditional gutter drains.



The horizontal manifolds in a siphonic roof drain system installation.



Free Area
5.42 Sq. In.
(35) Sq. Cm.



A(Pipe Size) = 02(50)

Performance Data *		
Size (A) in.(mm)	Max Capacity cfs (lps)	Resistance Value, K
02 (50)	0.40 (11.3)	0.66

VARIATIONS:
☐ Vandal Proof -U

OPTIONAL MATERIALS:
☐ Galvanized Cast Iron -G

Regularly Furnished: Duco Cast Iron Body with Combination Flashing Clamp and Air Baffle.

*As tested and certified by ANSI/ASME A112.6.9
"Siphonic Roof Drains" procedures and test apparatus.



CAROUSEL® ROOF DRAIN - A ROOF DRAIN WITH ADJUSTABLE EXTENSION

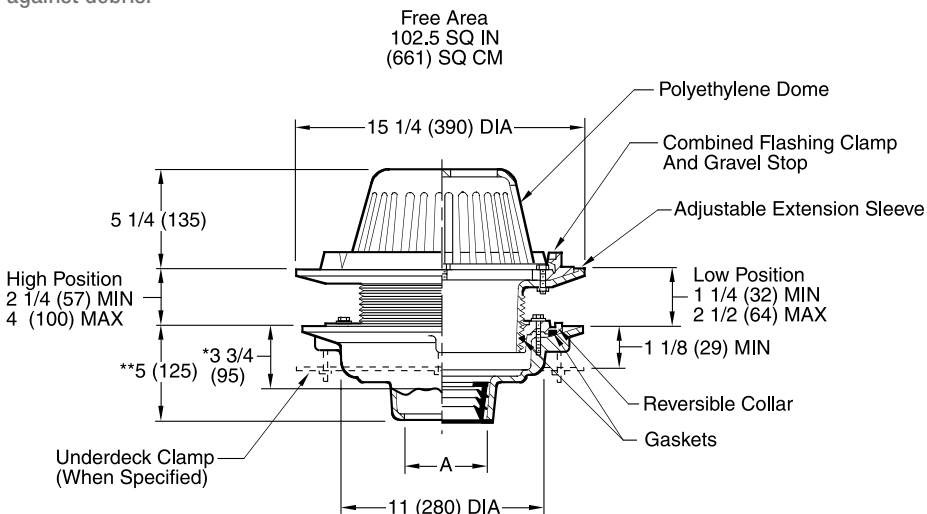


Figure # 1015
Carousel Roof Drain

Product Features:

- Used in flat roofs of any construction.
- Large, low profile dome for quick drainage and protection against debris.
- Adjustable extension for different insulation thicknesses.
- Wide clamping surface to hold flashing and roofing materials.
- Reversible collar allows for two extension ranges:
 - Low Position – MIN 1 ¼"; MAX 2 ½"
 - High Position – MIN 2 ¼"; MAX 4"
- Combined flashing clamp and gravel stop.

FUNCTION: Used in flat roofs of any construction. The adjustable extension sleeve permits adjustment from a minimum of 1 1/4" (32) to a maximum of 4" (100), easily accommodating up to 2 3/4"(70) of varying insulation thicknesses. The positive threading allows smooth perimeter movement and circumferential support of the top at any adjusted elevation. Large low profile dome provides sufficient free area for quick drainage of rainwater and protection against debris.



*This dimension to internal stop of Speedi-Set Gasket A (Pipe Size) = 02(50), 03(75), 04(100), 05(125) or 06(150)

**Same for Caulk, NO-HUB and Speedi-Set, 3 3/4 (95) for Threaded

Fig. 1015C CAULK OUTLET
Fig. 1015Y NO-HUB OUTLET

recommended deck opening	
with suffix -R	17 (430) DIA
less Suffix -R	14 (355) DIA

REGULARLY FURNISHED:
Duco Cast Iron Body with Adjustable Extension Sleeve, Reversible Collar, Combined Flashing Clamp and Gravel Stop, with Polyethylene Dome.

OPTIONAL MATERIALS:

- ☐ Aluminum Dome -AD
- ☐ Cast Iron Dome -CID
- ☐ Galvanized Cast Iron -G
- ☐ Rough Bronze Dome -RBD

VARIATIONS:

- ☐ Expansion Joint (Specify Fig. 1710)
- ☐ "L" Shaped Underdeck Clamp -CL
- ☐ L Speedi-Set Service Weight
02(50), 03(75) & 04(100)" sizes only
- ☐ LXH Speedi-Set Extra Heavy
02(50), 03(75) & 04(100)" sizes only
- ☐ Secondary Flashing Clamp -C2
- ☐ Sump Receiver -R
- ☐ Underdeck Clamp -C
- ☐ Vandal Proof Dome -U
- ☐ T Threaded Outlet

NOTE: Dimensions shown in parentheses are in millimeters.

ROOF DRAIN AND OVERFLOW DRAIN WITH DECK PLATE



Figure # 1800
Roof Drain and Overflow Drain
with Deck Plate

Product Features:

- Eliminates the need for an underdeck clamp.
- Roof drain installation can be performed from the top of the roof deck.
- Requires only one rectangular roof penetration.
- Recesses the drains slightly to prevent water build-up at the base of the drains.
- Drains can be preassembled to the deck plate and then put in place.
- Drains and deck plate are securely fastened in place.

FUNCTION: Used on flat roofs of any construction (other than poured-in-place) where an emergency overflow drain can be used in combination with a standard roof drain. Large sump drain bodies with low profile domes provide sufficient free area for quick drainage of rainwater while protecting the drain sump and connected piping from the intrusion of debris. Internal standpipe type overflow drain receives water only when the build-up is greater than the setting of the stand-pipe. The water dam standpipe can be cut to achieve various water depths on the roof. Attached wide dual drain deck plate with securing holes enables both drains to be secured to the roof deck from the top surface of the roof, reducing installation time, reducing the number of roof penetrations and eliminating the need for an underdeck clamp. The wide dual deck plate also recesses the drains slightly to prevent water build-up at the base of the drains.

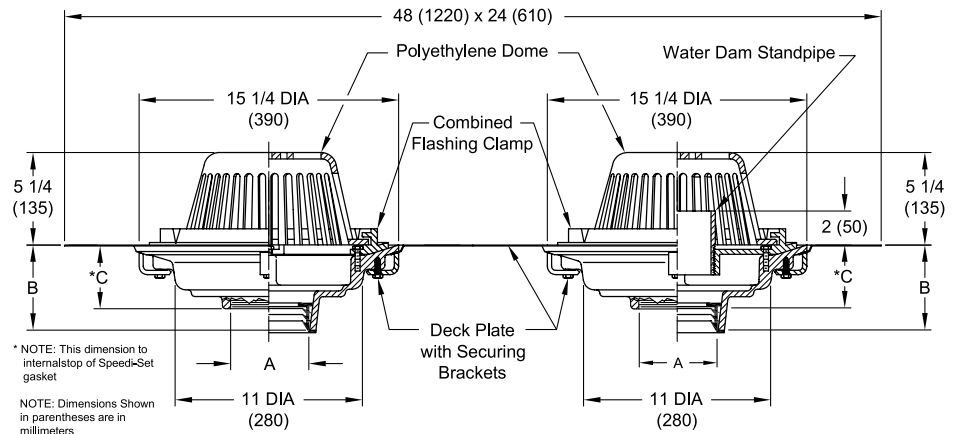


Fig. 1800C...CAULK OUTLET
Fig. 1800Y...NO HUB OUTLET

A SIZE	B		*C	FREE AREA SQ IN (SQ CM)
	CAULK, NO-HUB, & SPEED-SET	THREADED		
02(50), 03(75), 04(100)	5 (125)	3 3/4 (95)	3 3/4 (95)	102.5 (661)
05(125), 06(150)	5 (125)	3 3/4 (95)	3 3/4 (95)	102.5 (661)

REGULARLY FURNISHED:

Duco Cast Iron Bodies with Combined Flashing Clamp and Gravel Stop for Roof Drain and Combined Flashing Clamp and Gravel Stop with Internal Water Dam Standpipe for Overflow Drain. Deck Plate with Securing Holes Provided to Receive Both Drains. Both Drains Provided with Polyethylene Domes.

VARIATIONS:

- ☐ Expansion Joint (Specify Fig. 1710)
- ☐ Extension (Specify Height) -E
- ☐ "L" Shaped Underdeck Clamp -CL
- ☐ L Speed-Set Service Weight
02 (50), 03 (75), and 04 (100) Sizes Only
- ☐ LXH Speed-Set Extra Heavy
02 (50), 03 (75), and 04 (100) Sizes Only
- ☐ Secondary Flashing Clamp -C2 (For Extensions)
- ☐ Vandal Proof Dome -U
- ☐ T Threaded Outlet

OPTIONAL MATERIALS:

- ☐ Aluminum Dome -AD
- ☐ Cast Iron Dome -CID
- ☐ Galvanized Cast Iron Dome -CIDG
- ☐ Galvanized Cast Iron Body & Collar -G
- ☐ Rough Bronze Dome -RBD
- ☐ Stainless Steel Mesh Secured to Dome -SSMD
- ☐ Acid Resistant Coated -ARC

LOW PROFILE DOME ROOF DRAIN WITH DECK PLATE



Figure # 1010-RDP
Low Profile Dome with Deck Plate

Product Features:

- Speed of installation. Roof drains can be pre-assembled to deck plate and placed as one unit from the top roof surface, saving time.
- Secure Installation. Large Roof Deck Plate is easy to install using fasteners from the top of roof only. No under-deck clamp required means less hardware and time savings.
- Safer Installation. Installation from above means less time on ladders or lifts and less overhead work. The only task after installation is the actual pipe connection, made to a secure assembly.
- Reliability. The drains are installed in a recess to prevent a water dam.
- Simplicity. Roof penetrations are square, not round, saving time.

FUNCTION: Used in flat roofs of any construction. Large low profile dome provides sufficient free area for quick drainage of rainwater and protects the drain sump and connected piping from the intrusion of debris. Attached wide deck plate has securing holes enabling the drain to be secured to the roof deck from the top surface of the roof.

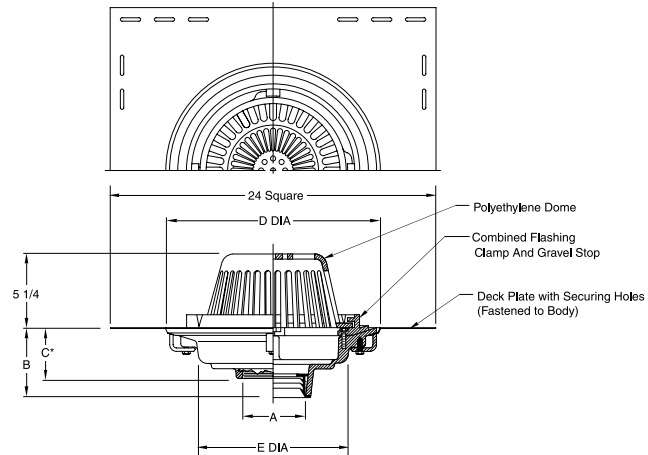


Fig. 1010Y-(RDP) . . . NO-HUB OUTLET
Fig. 1010C-(RDP) . . . CAULK OUTLET

A SIZE	B CAULK, NO-HUB, & SPEEDI-SET	THREADED	C*	D DIA	E DIA	FREE AREA SQ IN
02, 03 or 04	5	3 3/4	3 3/4	15 1/4	11	102.5
05 or 06	5	3 3/4	3 3/4	15 1/4	11	102.5
08 or 10	7 3/4	7 3/4	-	20	16	158

REGULARLY FURNISHED:

Duco Cast Iron Body with Attached Deck Plate with Securing Holes in Deck Plate, Combined Flashing Clamp and Gravel Stop with Polyethylene Dome.

VARIATIONS:

- ☐ L Speedi-Set Service Weight Outlet Conn. (02, 03, and 04) Sizes Only)
- ☐ LXH Speedi-Set Extra Heavy Duty Outlet Conn. (02, 03, and 04) Sizes Only)
- ☐ T Threaded Outlet Conn.
- ☐ Extension (Specify Height) -E
- ☐ Secondary Flashing Clamp -C2
- ☐ Vandal Proof Dome -U

OPTIONAL MATERIALS:

- ☐ Aluminum Dome -AD
- ☐ Cast Iron Dome -CID
- ☐ Galvanized Cast Iron Dome -CIDG
- ☐ Galvanized Cast Iron Body & Collar -CIDG
- ☐ Rough Bronze Dome -RBD
- ☐ Stainless Steel (Specify Fig. 9780)

*This Dimension to Internal Shop of Speedi-Set Gasket.



1. Start with our sump receiver deck plate. (-RDP)



2. Place 1010 roof drain into the sump receiver deck plate.



3. Bolt the 4 angled steel support brackets onto the roof drain until the deck plate is locked into place. (See -DPK Trim Kit)



4. Place the deck plate and roof drain combination on the roof and attach the deck plate to the roof structure.

TOP MOUNT DRAIN ELEVATOR

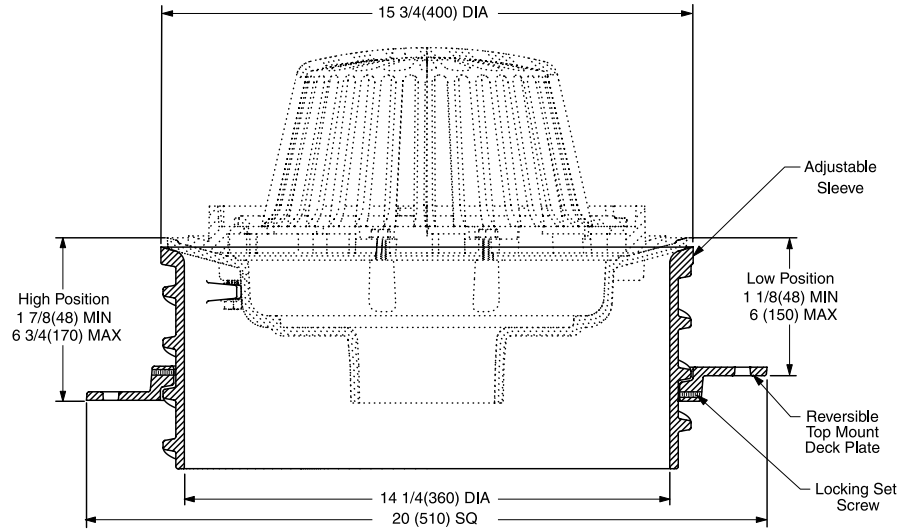


Figure # 1010DEK
Top Mount Drain Elevator

Product Features:

- Elevates Figure Numbers 1005, 1010, 1070 and 1080 type roof drains.
- Adjustable to compensate for insulation thickness.
- Top adjustment at deck for an easier and more secure installation.
- Overall adjustment height of 6-3/4".
- Drain Elevator is outside of the waterway, eliminating leaks.
- The cast thread design provides for a quick adjustment—up or down; full adjustment achieved with one full turn.
- Top mount reversible collar eliminates the need for a conventional extension, underdeck clamp and sump receiver.

FUNCTION: Used to elevate Figure Numbers 1005, 1010, 1070, and 1080 type roof drains on the top side of the roof deck to compensate for insulation thickness.



NOTE: 16 1/2 (420) diameter deck opening recommended.

REGULARLY FURNISHED:
Duco Coated Cast Iron Adjustable Sleeve and Top Mount Reversible Deck Plate.

OPTIONAL MATERIALS:
☐ Galvanized Cast Iron -G

NOTE: Dimensions shown in parentheses are in millimeters.

DOWNSPOUT NOZZLE

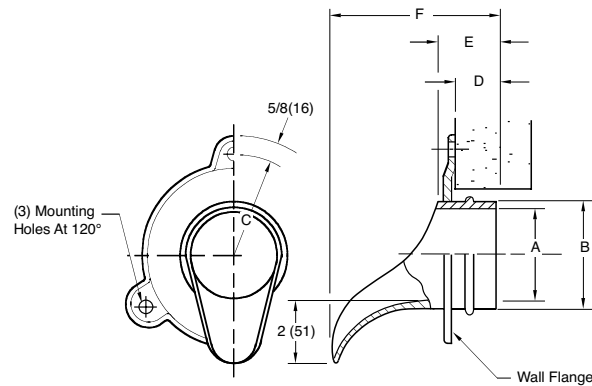


Figure # 1770Y
Downspout Nozzle

Product Features:

- Nozzle design diverts water away from building, eliminating wall stains.
- Wall flange covers rough opening.
- Bronze Nozzle and Flange.
- Easily connects with standard no-hub coupling

FUNCTION: Used as a parapet overflow or at the base of a wall where a concealed leader discharges rainwater to ground. Nozzle design diverts water away from building, eliminating wall stains. Wall flange covers rough opening and serves as anchor.



NOTE: Dimensions shown in parentheses are in millimeters.

REGULARLY FURNISHED:
Cast Bronze Nozzle and Flange

VARIATIONS:
☐ Bird Screen -BS

OPTIONAL MATERIALS:
☐ Nickel Bronze -NB
☐ Polished Bronze -PB

☐ Fig. 1770Y.....NO-HUB Connection

A=PIPE	02(50)	03(75)	04(100)	06(150)
B=DIA	2 3/4 (70)	4 (100)	5 (125)	7 1/4 (185)
C=RAD	2 3/4 (70)	3 1/2 (89)	3 7/8 (98)	5 (125)
D	1 3/8 (35)	1 3/8 (35)	1 3/8 (35)	1 13/16 (46)
E	2 1/16 (52)	2 1/16 (52)	2 1/16 (52)	2 1/2 (64)
F	5 5/8 (143)	5 5/8 (143)	5 5/8 (143)	6 1/4 (160)



QUAD CLOSE® "STINK STOPPER" TRAP SEAL DEVICE



Figure # 2692
Quad Close Trap Seal Device

Product Features:

- A Tested and Reliable Solution – IAPMO Listed: File No. 7479. ASSE Listed: Standard 1072 Record No. 1435.
- Easy to Install—Insert the device in the drain outlet until it is flush with the bottom of the drain or top of the outlet piping. For strainers, insert the trap seal as low as possible into the throat of the strainer.
- A Value for the Purchaser—Designed to handle a wide range of pipe and internal drain body diameters. Can be retrofitted into existing drains.
- Available in 2", 3", 3 1/2" and 4" sizes.

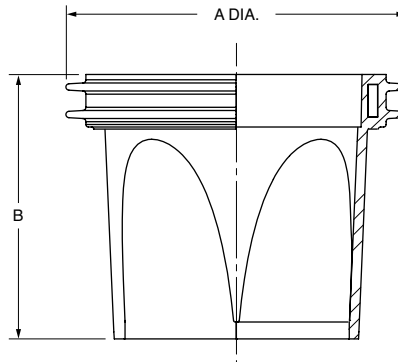
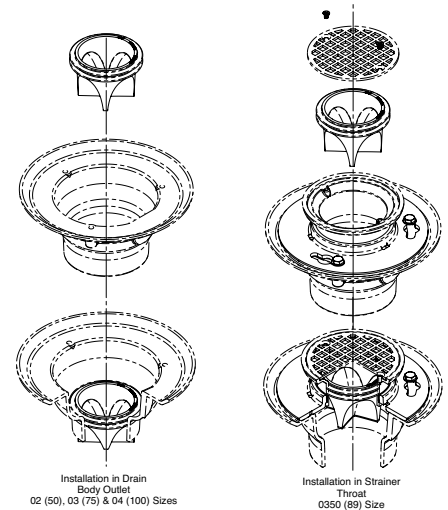


Fig. No.	A (Pipe Size)	B
2692-02	02(50)	2 3/4(70)
2692-03	03(75)	2 3/4(70)
*2692-0350	0350(89)	2 3/4(70)
2692-04	04(100)	2 3/4(70)



PROTECTIVE FLOOR DRAIN & CLEANOUT TOP COVER



Protective Floor Drain & Cleanout
Top Cover

Protective cover is furnished with all strainer heads, suffix -A through -T and floor cleanout tops, Figure number 4020 through 4211.

Product Features:

- All strainer heads and cleanout tops shipped individually are shrink wrapped in plastic before leaving the factory.
- The cover protects the drain/cleanout top during shipping, warehousing and on the job site.
- Each protective cover is clearly marked with the product number and the Smith logo.
- The cover protects the drain/cleanout top during the pour, preserving the finish.



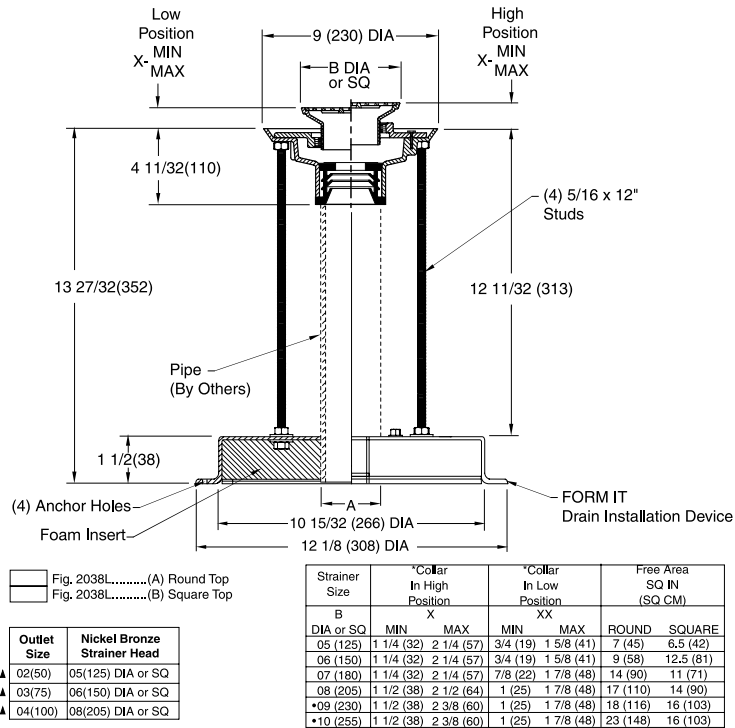
Figure # 2038
Shower Drain with Formit Drain
Installation Device

Product Features:

- Permits pre-assembly of the drain to the decking without having any connected piping below.
- Four anchor holes secure Formit to the deck or sub-floor, providing rigidity and stability for the drain assembly during construction and concrete pour.
- Drain elevation can be easily adjusted and leveled to meet finished floor height or pre-adjusted to a known rough-in dimension prior to arrival on jobsite.
- After concrete has set and the forms have been stripped away, Formit creates an open cavity after removing the foam insert under the plate, allowing easy access for final connection of the waste line piping.
- Formit eliminates the frustration of resetting a drain that has fallen over or is misaligned, which will save time and labor costs.

FUNCTION: The Jay R. Smith Mfg. Co. Formit Drain Installation Device is designed to stabilize the drain, provide adjustment during the installation process and allow final connection of outlet piping to drain after the concrete pour.

Formit is available for shower drains, 8 1/2" & 12" diameter floor drains, 8 1/2" & 12" diameter or square enameled floor sinks with no-hub outlets and 12" square stainless steel floor sinks. Formit can be sold pre-assembled with the drain or sold separately as the Drain Installation Device only –DID.



REGULARLY FURNISHED:
Duct Cast Iron Body with Speed-Set Outlet and Adjustable Strainer Head (as specified) with FORM IT Drain Installation Device and Hardware.

▲ Meets ANSI Spec A112.6.3-2001 02(50), 03(75) or 04(100) sizes only.

NOTE: Dimensions shown in parentheses are in millimeters.

VARIATIONS:

- Flapper Type Backwater Valve -V
- Hinged Grate -H
- Sediment Bucket -B
- Trap Primer Connection -P050 1/2" (13) & -P075 3/4" (19)
- Vandal Proof Screws -U
- T Threaded Outlet

OPTIONAL MATERIALS:

- Bronze Body -BB
- Chrome Plated Strainer -CP
- Galvanized Cast Iron Body -G
- Nickel Bronze Strainer -NB
- Polished Bronze Strainer -PB
- Stainless Steel Body and Strainer Head -SS

Figure # 2038-DID

Formit Drain Installation Device Submittals

Floor and Shower Drains

Description

Shower Drain with Formit Drain Installation Device
Formit Drain Installation Device for Shower Drain Series
8 1/2" Diameter Top Floor Drains with Formit Drain Installation Device
12" Diameter Top Floor Drains used with 1010DID Formit Drain Installation Device

Formit Drain Installation Device for 8 1/2" Diameter Top Cast Iron Floor Drains

Sanitary Floor Drains

Description

8 1/2" Square Enameled Floor Sink with Formit Drain Installation Device
Formit Drain Installation Device for 8 1/2" Square Enameled Floor Sink Series
12" Square Enameled Floor Sink with Formit Drain Installation Device
Formit Drain Installation Device for 12" Square Enameled Floor Sink Series

Specialty (Stainless) Floor Sinks

Description

Stainless Steel Floor Sink with Formit Drain Installation Device
Formit Drain Installation Device for Stainless Steel Floor Sink Series

Model Number

2038
2038DID
2039
Add *1010DID Suffix to Figure Number Shown
2039DID

Applies to Figure Numbers:

2005, 2010, 9700
2005, 2010, 9700
2110, 2120
*2131, *2140, *2141, *2142
2110, 2120

Model Number

3038
3038DID
3039
3039DID

Applies to Figure Numbers:

3100 Series
3100 Series
3420, 3430, 3440
3420, 3430, 3440

Model Number

9095
9095DID

Applies to Figure Numbers:

3001, 9691
3001, 9691



JUBILEE "TWIS-TO-FLOOR®" 4000 SERIES CLEANOUTS



Figure # 4100
Finished Floor Cleanouts with
"Twis-to-Floor" Adjustable Tops

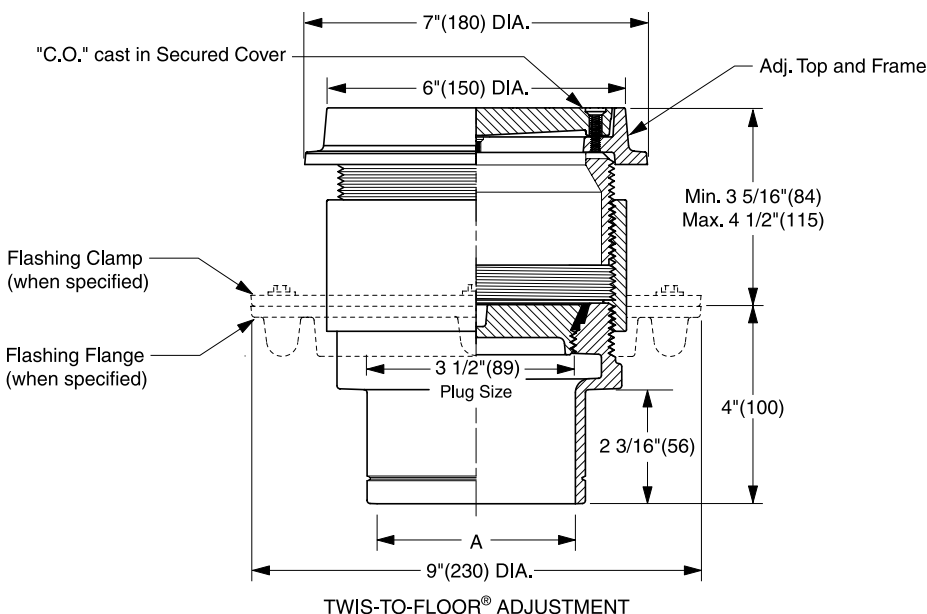
Product Features:

- One size top assembly for 2-4" outlet ferrules eliminates sorting tops by size, maximizes installation versatility and uniform appearance.
- Regularly furnished thicker finished floor cover reinforced with support ribs for strength and durability to eliminate dishing.
- Regularly furnished finished floor cleanouts are provided with unique new top assembly which allows for interchangeability of scoriated, tile or terrazzo covers AFTER finished concrete pour.
- Finished floor top frame and cover are secured independently so frame stays in place when cover is removed during maintenance.
- The smooth outside surface of the top assembly and the thread protector Styrofoam ring maximize adjustment during and after the finished floor concrete pour.
- 2-4" ferrules for no-hub, spigot, inside caulk or gasket outlet connection are provided with positive non-tilt engagement of adjustable top.
- Machined ferrule provides positive non-tilt engagement for optional threaded anchor flange and clamping collar that can be adjusted for waterproof membrane placement.

Ferrule Assembly Features:

- Easy to attach and remove to adjust frame.
- Easy to install clamping device.
- Cast iron clamping device providing maximum clamping force to the membrane.

Jay R. Smith Mfg. Co.'s "Jubilee Series" Cleanout line meets all the requirements of codes and standards for maximum access, while providing an aesthetically pleasing product for finished floor installation. The Twis-To-Floor® Cleanouts also incorporate additional strength during and after installation and unique versatility in adjustment before and after the pour, features every contractor can get excited about using.



"A" (Pipe Size) = 02(50), 03(75), 04(100) or 05(125)

- | | |
|--------------------------|---|
| <input type="checkbox"/> | Fig. 4100S.....Gasket Seal - ABS Plug |
| <input type="checkbox"/> | Fig. 4101S.....Gasket Seal - Bronze Plug |
| <input type="checkbox"/> | Fig. 4103S.....Taper Thread - Bronze Plug |
| <input type="checkbox"/> | Fig. 4104S.....Taper Thread - ABS Plug |

(Twis-to-Floor® design shown with gasketed plug.)

NOTE: Dimensions shown in parentheses are in millimeters.

REGULARLY FURNISHED:

Duco Cast Iron Cleanout with Round Adjustable Scoriated Secured Nickel Bronze Top. Closure Plug Type as Indicated By Figure Number Selected.

VARIATIONS:

- | | |
|--------------------------|---------------------------------|
| <input type="checkbox"/> | Flashing Flange -F |
| <input type="checkbox"/> | Flange with Flashing Clamp -F-C |
| <input type="checkbox"/> | Vandal Proof Top -U |

OPTIONAL MATERIALS:

- | | |
|--------------------------|-------------------------|
| <input type="checkbox"/> | Galvanized Cast Iron -G |
| <input type="checkbox"/> | Polished Bronze Top -PB |



THE BOSS TEE, CLEANOUT AND TEST TEE



Figure # 4505
Boss Tee Cleanout and Test Tee

Product Features:

- Sizes - 3", 4", 6"; No-hub and Hub & Spigot Outlets.
- Safety – The contractor is not required to remove inflatable plug from inside of stack with 5-15 psi pressure just upstream of the plug.
- Reduces the chance of mold due to water spilling inside the chase.
- Controlled testing environment – provides contractor with effective means of controlling the filling and draining of piping system.
- Reliability – better testing results due to reliable closure of the stack.
- Time & Material savings – eliminates the inflatable plug in the vertical stack and the time needed to get it to seal properly.
- Efficient – test up to 3 floors at a time. The inspector can use the gauge to verify pressure in the line.
- Larger, spherical opening in the fitting allows for easy hand access for line testing/inspection/cleaning.
- Cleanout tee remains in the stack after testing to be used for future maintenance and testing.

FUNCTION: Used in concealed drainage lines where a cleanout is desired that allows the testing of piping above through the use of an internal threading inside the tee.

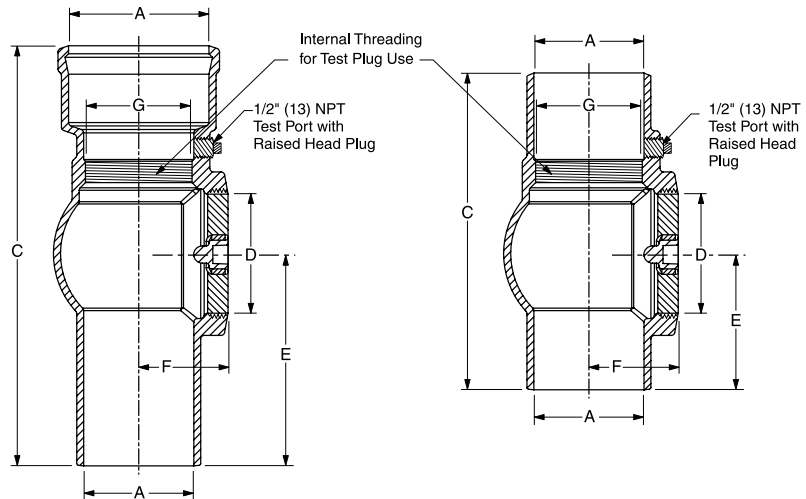


FIG. 4505S.....HUB and SPIGOT

A PIPE SIZE	C	D PLUG SIZE	E	F	G SIZE
03(75)	13 1/2(345)	3(76)	7 (180)	2 1/2(64)	2 1/2(64)
04(100)	14 3/4(375)	4(100)	7 1/2(190)	3 (76)	3 1/2(89)
06(150)	17(430)	6(150)	8 1/2(215)	4(100)	5(125)

Spigot Outlet Sized for Service Weight and/or NO-HUB.

FIG. 4505Y.....NO-HUB

A PIPE SIZE	C	D PLUG SIZE	E	F	G SIZE
03(75)	9 1/4(235)	3(76)	3 3/4(95)	2 1/2(64)	2 1/2(64)
04(100)	10 1/2(265)	4(100)	4 1/2(115)	3(76)	3 1/2(89)
06(150)	14(355)	6(150)	6 1/4(160)	4(100)	5(125)

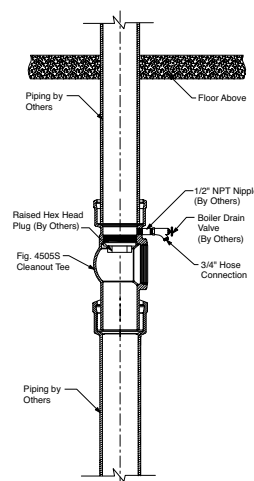
REGULARLY FURNISHED:
Ducto Cast Iron Cleanout Tee with Internal Threading, 1/2(13) NPT Test Port with Raised Head Plug and Countersunk Taper Threaded Bronze Plug.

VARIATIONS:
☐ Test Valve and Reference Gauge Kit - TK
☐ Test Plug - TP

OPTIONAL MATERIALS:
☐ Galvanized Cast Iron - G

NOTE: Dimensions shown in parentheses are in millimeters.

Let The Boss Tee do the Work!





6" DIAMETER CORED HOLE STAINLESS STEEL HYDRANT BOX AND WALL HYDRANT

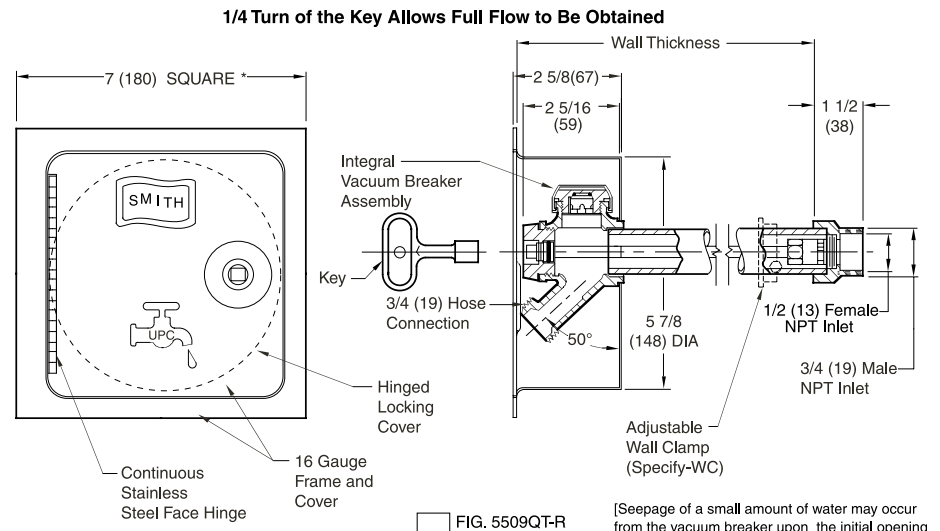


Figure # 5509QT-R
Cored Hole Boxed Hydrant
(Shown with 5609QT Hydrant)
Meets ANSI A112.21.3

Product Features:

- Fits 6" dia. cored drill hole.
- Flush installation to eliminate catch points.
- Frame, cover & housing are made of 16 gauge, type 304 stainless steel.
- Locking hinged cover opens 180°.
- Simple & easy to install in core drilled concrete wall.
- Regularly furnished with the 5609QT hydrant.
- Quarter-turn full-flow feature.
- 3/4" inlet and hose connection.
- Removable "T" handle key.
- Flush installation with backer plate.
- Bronze nickel plated hydrant.
- Mild climate, non-freeze hydrant with integral vacuum breaker and vandal resistant cap.
- Commercial and light commercial construction applications.

FUNCTION: Provides positive non-freeze protection where water is required at the outside of the building and features an integral vacuum breaker. The stainless steel round recessed box conceals the nozzle and operating mechanism. The locking cover prevents unauthorized use.



REGULARLY FURNISHED:
Bronze Nickel Plated Quarter Turn
Non-Freeze Hydrant with Hose
Connection, Integral Vacuum Breaker,
"T" Handle Key, and Stainless Steel
Box with Full 180° Cover Opening.

VARIATIONS:

- Adjustable Wall Clamp -WC
- Cylinder Lock -CL
- 1" (25) Hose Connection -HC1
- 1" (25) Male NPT Inlet Connection -IC1
- "Water" On Cover -W

** Add 3/4" (19) to Overall Length When Specified

- NOTES:**
1. *Recommended wall opening 6" (150) DIA. Hydrant shall be in the vertical position only, the connection must be on the bottom.
 2. When ordering, specify wall thickness in 2" (51) increments as follows: 06(150), 08(205), 10(255), 12(305), 14(355), 16(405), 18(455), 20(510), 22(560) or 24(610). When wall clamp -WC is desired, increase wall thickness dimension by 2" (51).
 3. All Jay R. Smith hydrants are manufactured with "NO-LEAD" brazing rings, and USDA approved lubricants.
 4. The AB1953, California Lead Law, and NSF/ANSI Standard 61-2008 - Drinking Water System Components are not applicable to Jay R. Smith hydrants as they do not convey/dispense water for human consumption through drinking or cooking.
 5. Dimensions shown in parentheses are in millimeters.

Specify Figure # 5517 for 6" Diameter Cored Hole Hydrant Box and 5619 Guardian Hydrant.





GUARDIAN PLUS DUAL CHECK® HYDRANT WITH INTERGAL VACUUM BREAKER, INTEGRAL STOP WATER SERVICE SHUT-OFF VALVE, DUAL CHECK VALVE AND STAINLESS STEEL BOX



FIG. # 5515

Guardian Plus Dual Check® Hydrant with Integral Stop Water Service Shut-off Valve and Non-freeze Protection

Specifications:

- Complies with ASME A112.21.3M
- Complies with ASSE 1019B, 1052 and 1053
- IAPMO Listed, File #2749

Product Features:

- Service shut-off valve enables the water supply to be shut-off at the hydrant, allowing for easy maintenance.
- Quarter-turn full-flow feature
- 3/4" (19) inlet and hose connection
- Flush installation to eliminate catch points
- 16 gauge steel frame cover & 20 gauge housing, type 304 stainless
- Bronze hydrant with stainless steel face
- Drop down locking hinged cover opens 180° to allow access without damaging cover
- Self draining non-freeze hydrant with dual check valve & integral vacuum breaker
- Commercial construction applications
- Replacement parts are available in kit HPRK - 19.

FUNCTION:

The Guardian Plus Dual Check Hydrant is ASSE 1052 Certified. It has a quarter-turn feature that allows for a full flow of water with a quarter turn of the ergonomically designed wheel handle or "T" handle key. The hydrant features an integral vacuum breaker, water service shut-off valve and dual check valve that provide positive non-freeze protection where water is required at the outside of the building. The stainless steel recessed box conceals the nozzle and operating mechanism. The locking cover prevents unauthorized use.

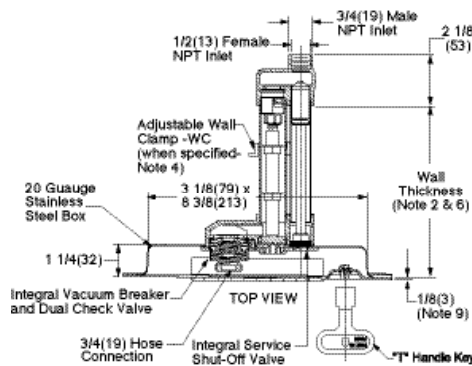
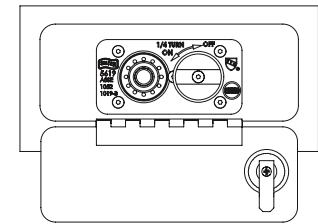
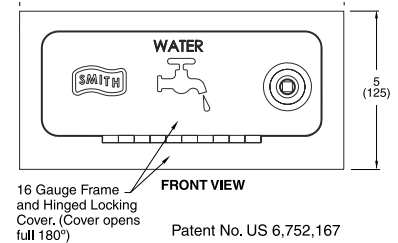


FIG. 5515



Regularly Furnished:

Bronze Quarter Turn Non-Freeze Automatic Draining Hydrant with Stainless Steel Face, Hose Connection, Integral Vacuum Breaker, Integral Service Shut-Off Valve, Dual Check Valve, "T" Handle Key, and Stainless Steel Box with Full 180° Cover Opening.

NOTE: Dimensions shown in parentheses are in millimeters.

Variations:

- Adjustable Wall Clamp -WC
- 1" (25) Hose Connection -HC1
- 1" (25) Male NPT Inlet Connection -IC1
- Mild Climate -SAP
- Cylinder Lock -CL
- Wheel Handle -WH

Optional Materials:

- Nickel Bronze Box Face -NB
- Polished Bronze Box Face -PB
- Rough Bronze Box Face -RB
- Chrome Plated Box Face -CP

Available without the box; See Figure # 5615



Figure # 5615
Stainless Steel Unit Without Box



Figure # 5515
Stainless Steel Flush Mount Box





ENVIRO-FLO® II TRENCH DRAIN SERIES



Figure # 9930
The Enviro-Flo II Trench Drain

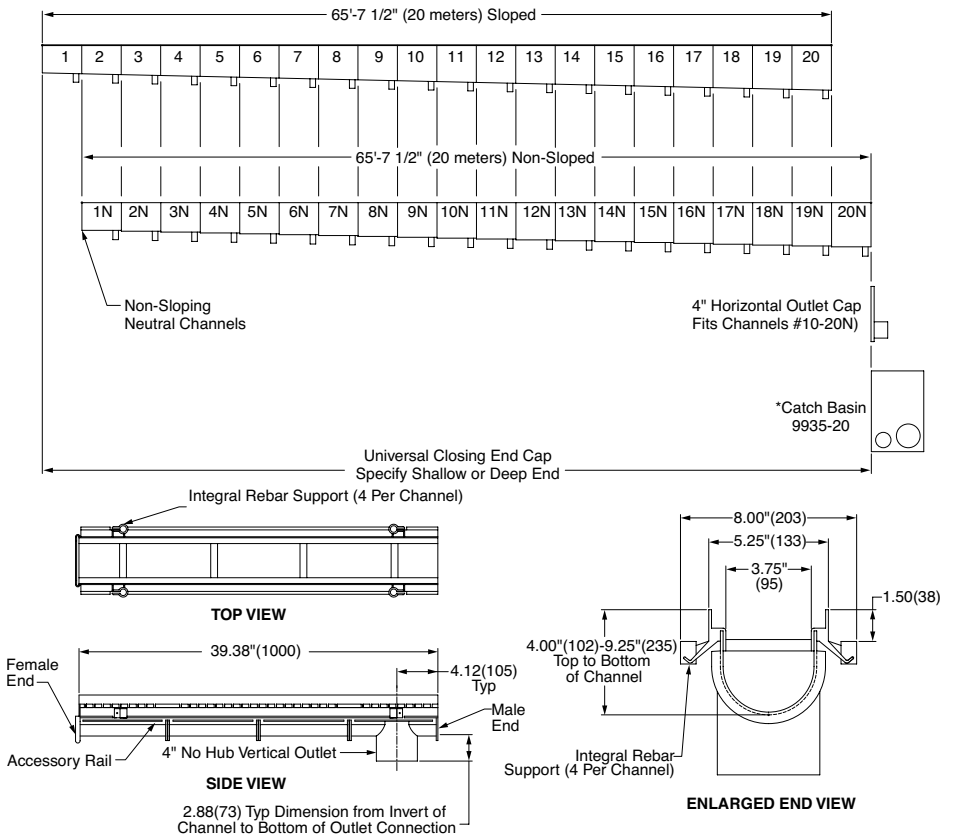
System Features

- Each section has a 4" molded no-hub bottom outlet connection;
- Each channel is identified with flow arrow and sequence numbers;
- Each channel has angular full length anchoring ribs;
- Each channel is shipped with a removable factory insert board constructed from post-industrial recycled material that functions as a stabilizer and debris guard;
- Horizontal outlet cap available;
- Mechanical interlocking end caps.

New Features for Enviro-Flo II

- **Longer, Shallower Runs:** Specify up to 20 sloping and 20 neutral channels.
- **New Mounting System:** Integral rebar clips or the new Rante Arrow offer flexible installation options.
- **Secure Tongue & Groove Connections:** New tongue and groove connectors retain more sealant for a more uniform joint.
- **Flexible Installation:** Choose outlet location, create miter and tee connections with adapters, and shorten channels in the field.

FUNCTION: The 9930 is a sloped drainage system with 100% polypropylene channels of interlocking design with a built-in slope of 0.6% and radiused bottom. This model is recommended for light and heavy duty applications. The 9930 channel utilizes the Quick-Lok® grate feature that allows the grating to be secured to the channel easily. A variety of channel grates are available.



REGULARLY FURNISHED:

1 Meter (3.28') 100% Polypropylene Post Industrial Recycled Material with U.V. Inhibitors. Channel of Interlocking Design with a Built-in Slope of 0.6% with Radiused Bottom. Supplied with Secured Grate.

Note: Dimensions in Parentheses are in mm.

***Note:** If Catch Basin is Specified For Any Other Channel Except For the #20 Channel, a Shim Must be Ordered, P/N: 9930-ES

Note: This Trench Drain System is Designed for "On Grade Applications Only" as There are No Provisions for a Flashing Flange or Flashing Clamp

****Note:** All 1 Meter Long Sloped and Neutral Channels Have a Molded 4"(111) No-Hub Bottom Connection.

VARIATIONS:

- ☐ Grate Specifications
- ☐ Closing End Cap Shallow -ES
- ☐ Closing End Cap Deep -ED
- ☐ Horizontal Outlet 4" -H4
- ☐ Catch Basin Only 9935-20
- ☐ Catch Basin Plastic Bucket -BP
- ☐ Direction Change Coupling -DCC
- ☐ Stainless Steel Overlay Rails -SSR
- ☐ 9849 Rante Arrow
- ☐ 4" No-Hub Bottom Outlet Adaptor -BO

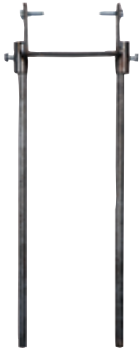


Figure # 9869-R
Rebar Channel Support Chair

Product Features:

- Uses rebar or other job site materials to support and hold channel ends together.
- Allows for vertical and horizontal adjustment to Smith/ACO Trench Drain Series channels.

FUNCTION: This installation tool uses rebar or other job site materials to support and hold channel ends together, allowing vertical and horizontal adjustment to Smith/ACO and Enviro-Flo® Trench Drain Series channels. Supports channels and keeps them from floating, allows vertical and horizontal adjustment for a monolithic cement pour. Suitable for 9814, 9816, 9818, and 9820 Drainage Systems.

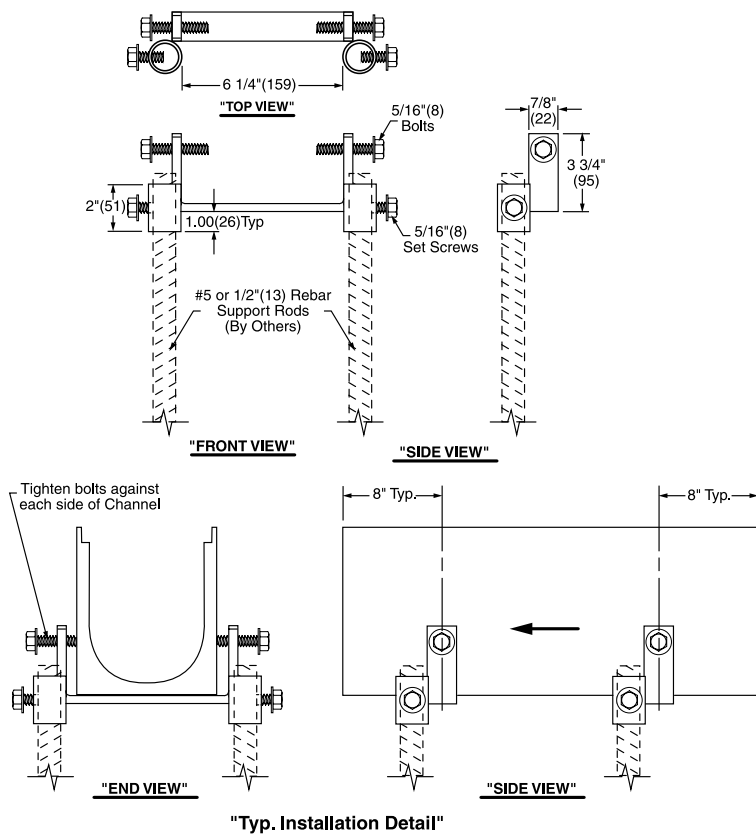


Figure # 9869-D
Double Arrow Channel Support

Product Features:

- Supports and holds two (2) channel ends together.
- Allows for vertical and horizontal adjustment to Smith/ACO Trench Drain Series.

DOUBLE ARROW CHANNEL SUPPORT CHAIR

Function: This installation device supports and holds channel ends together, allowing vertical and horizontal adjustment to Smith/ACO Trench Drain Series channels.

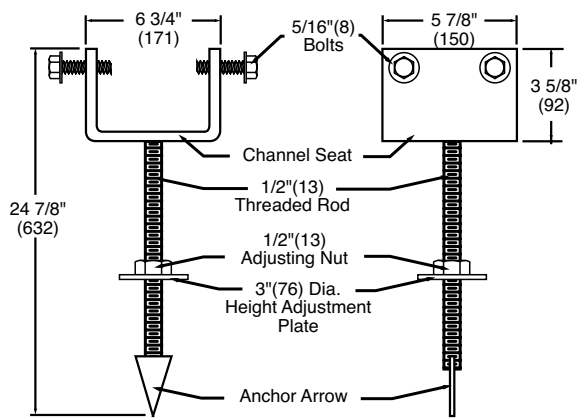


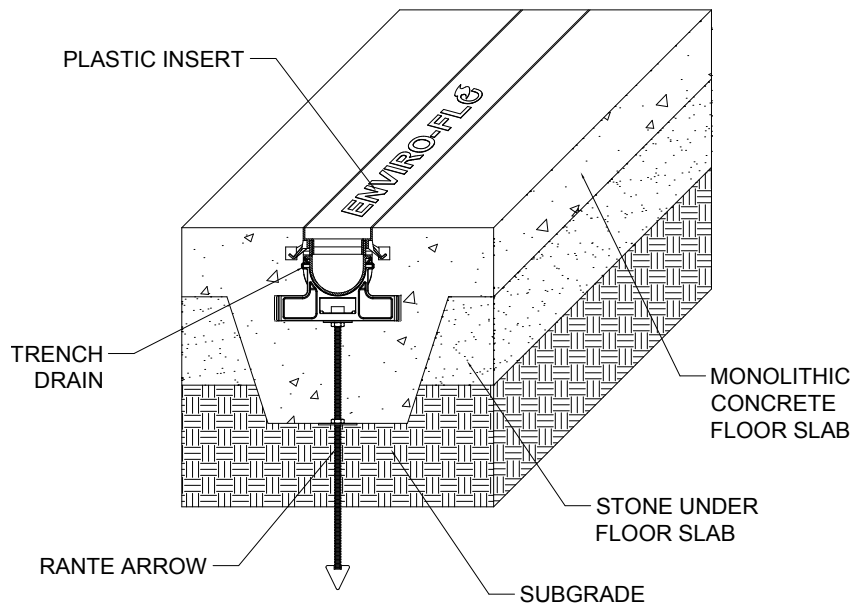


Figure # 9849
Rante-Arrow Channel Chair

Product Features:

- The Rante-Arrow Channel Chair requires only one (1) anchor per 39" of Enviro-Flo® II Trench Drain channel length - an entire system can be installed by one person.
- The Rante-Arrow has a built in leveling device, requiring one person and a wrench to adjust channel height.
- Provides vertical and horizontal adjustments for quick and easy leveling.

FUNCTION: The 9849 Rante-Arrow is designed for use with the 9930 and 9931 systems. The 9849 Rante-Arrow firmly anchors the channel system in most sub-base conditions, eliminating flotation and allowing for a monolithic pour. Provides vertical and horizontal adjustments for quick and easy leveling.



MORRIS GROUP INTERNATIONAL



JAY R. SMITH MFG. CO.®
MEMBER OF MORRIS GROUP INTERNATIONAL

JAY R. SMITH MFG. CO.®

Plumbing and Drainage Products
P.O. Box 3237 • Montgomery, AL 36109-0237
Tel 800-467-6484 • 334-277-8520
www.jrsmith.com



MORRIS GROUP
INTERNATIONAL

www.morrisgroup.co

Innovative Spirit and Engineering Foundation

"What sets us apart from competitors is our engineering and spirit. We have a 'can-do' spirit. If you ask us to do something, we will do it or figure out how to do it. That's the part our customers like, that's the part we like."

- Don Morris, President and CEO



MORRIS GROUP
INTERNATIONAL

www.morrisgroup.co



Est. 1954

ACORNGENCON
PLASTICS

ACORN ENGINEERING COMPANY

Engineered Plumbing Products
P.O. Box 3527 • City of Industry, CA 91744-0527 U.S.A.
800-488-8999 • 626-336-4561
www.acorneng.com

ACORN-GENCON PLASTICS, LLC

Injection Molded Products
13818 Oaks Avenue • Chino, CA 91710 U.S.A.
Tel 909-591-8461
www.acorn-gencon.com



ACORNVAC, INC.

Vacuum Plumbing Systems
13818 Oaks Avenue, Chino, CA 91710
Tel. 800-591-9920 • Tel. 909-902-1141
www.acornvac.com



CHRONOMITE LABORATORIES, INC.

Tankless Electric Water Heaters
P.O. Box 3527 • City of Industry, CA 91744-0527 U.S.A.
Tel 800-447-4962
www.chronomite.com



ELMCO GROUP

Manufacturer Representatives
P.O. Box 3787, City of Industry, CA 91744
Tel 626-333-9942
www.morrisgroup.co



MORRIS INDUSTRIES MEXICO, S. DE R.L. DE C.V.

Central and Latin America Manufacturing and Sales
Maquiladoras #1387-1 Col.Cd. Industrial Tijuana, B.C., C.P. 22444
Tel 011-52-664-623-4580
www.morrisgroup.co



MORRIS PROPERTY MANAGEMENT COMPANY

Construction, Interior Design, Landscaping and Maintenance
15058 Proctor Avenue • City of Industry, CA 91746
Tel 626-855-4888
www.morrispropertiesmgt.com



MURDOCK MANUFACTURING

Drinking Fountains and Hydrants
P.O. Box 3527 • City of Industry, CA 91744-0527 U.S.A.
Tel 800-45-DRINK • 626-333-2543
www.murdockmfg.com



POTTER ROEMER

Fire Protection Equipment
P.O. Box 3527 • City of Industry, CA 91744-0527 U.S.A.
Tel 800-366-3473
www.potterroemer.com



WHITEHALL MANUFACTURING

Hospital and Rehabilitation Products
P.O. Box 3527 • City of Industry, CA 91744-0527 U.S.A.
Tel 800-782-7706 • 626-968-6681
www.whitehallmfg.com